

# FORCE 8™ TWIN CARTRIDGE HALF FACE RESPIRATOR

PRODUCT CODE: BHTOA3-0L5-N00

ONE OF THE LIGHTEST, MOST WELL BALANCED HALF FACE MASKS AVAILABLE WITH PRESS TO CHECK™ FILTERS

## TECHNICAL SPECIFICATION

### RESPIRATORY PROTECTION

## INSTRUCTIONS FOR USE

Place the respirator over the mouth and nose, then pull the harness over the crown of the head

Take the bottom straps in both hands, place them at the back of the neck and hook them together

Tighten the top straps first by pulling on ends to achieve a comfortable and secure fit

Tighten bottom straps using either front or rear adjustments (Strap tension may be decreased by pushing out on back side of buckles)

Perform a positive and/or negative pressure fit check

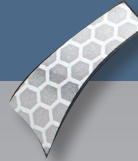
### FACEPIECE:

Thermoplastic Elastomer  
Padded for extra comfort over prolonged use, and moulds to face shape for excellent seal



### CR2 REFLECTIVITY:

Reflective strips create increased visibility in low-light environments for added safety



### FILTER:

Force 8® Filters available with low profile angle design for minimal visual impairment



## CLEANING & MAINTENANCE

Cleaning is recommended after each use. Remove the gas/vapour and/or particle filters

Clean the facepiece (excluding filters) by immersing in warm cleaning solution, water temperature not to exceed 50°C and scrub with soft brush until clean. Add neutral detergent if necessary. Do not use cleaners containing lanolin or other oils

Rinse in fresh, warm water and air dry in a non-contaminated atmosphere

Respirator components, especially exhalation valve and seat, should be inspected prior to each use. A respirator with any damaged or deteriorated components should be discarded

The cleaned respirator should be stored away from contaminated areas when not in use



## CONFORMITY

Tested to the relevant European Standards (EN140, EN141, EN143, EN14387) and have met the requirements shown below:

Facepiece EN140

Filter Performance EN14387:2004

Filter Performance EN143:2000